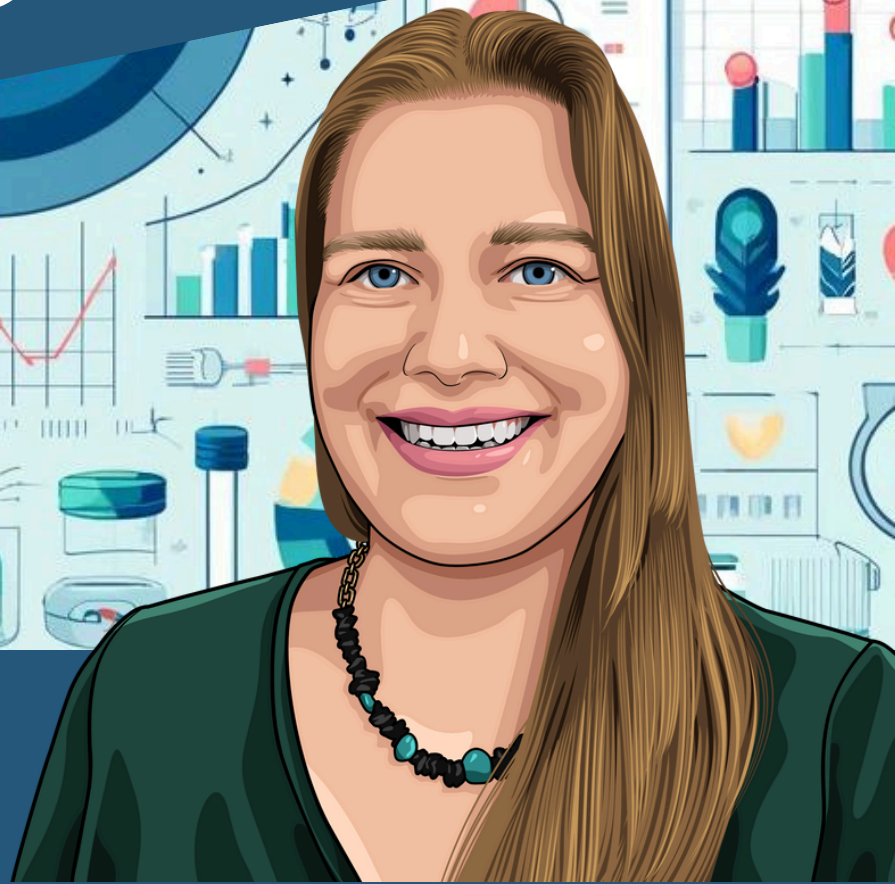


DATA-DRIVEN DECISIONS PART 2



SPD DATA EXPERT

BEYOND
CLEAN

Beth Perry

Engineer, Business Intelligence &
Analytics | Censis Technologies

Beyond Clean SPD Data Expert™:

Data-Driven Decisions, Part 2

Beth Perry

Engineer, Business Intelligence & Analytics | Censis Technologies

Welcome to part 2 of becoming a data-driven department! Hopefully, you've identified a decision you need to make and the type of data you need to support your decision.

I'll continue using my example of OR complaints about too many incomplete trays.

The first step is to establish a **baseline**. Where do you currently stand? What percentage of trays sent to the OR are missing instruments?

Next, identify a **target**. Where do you want to be? Be realistic. What is a reasonable percentage of trays to be sent up incomplete?

Now you need to implement a **countermeasure/intervention**. What will you do to get from where you are now to where you want to be? This is one place where your hard-earned intuition is key! Why do you think trays might be getting sent up incomplete? What can you and your staff do to change that?

Finally, you need to **track and trend** your data over time. Did you reach your target, or are you at least moving toward it? If you are, your countermeasure has been effective, but keep tracking to be sure the improvement is sustained. If you're not, you've still learned something. Identify a new countermeasure and try again.

This was a real situation for one hospital I worked with. They reduced their incomplete trays from 14% to 9% in one month (35% reduction!) simply by educating staff about the initiative and then posting the "% Assembled Complete" metric in their department every day.

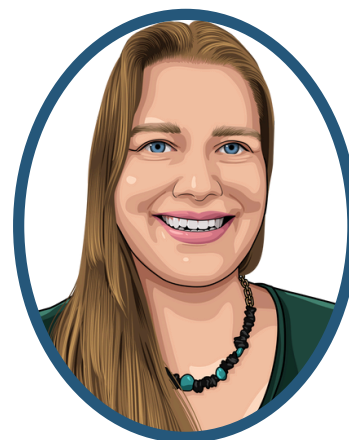
If you find you're not progressing to the target, you may need more data. Do you know where you are falling short? Is it a specific service line? Shift? Type of instrument? Being able to refine the problem will help inform future countermeasures (one data-driven decision feeds another)!

Have more questions? Contact Beth at: beth.perry@censis.com

Beyond Clean SPD Data Expert™:

Beth Perry

Engineer, Business Intelligence
& Analytics



Beth is a Business Intelligence and Analytics Engineer with Censis Technologies. She has 17 years' experience exploring databases and designing data visualizations. With her educational background in journalism, she strives to find practical ways to communicate insights both clearly and effectively.

Since 2012, Beth has enjoyed building and supporting tray tracking software programs critical to Sterile Processing teams across the United States. Her passion is to create data and analytics tools that drive operational excellence and ensure patient safety. She won an innovation award in 2022 for her work on Censis' analytics platform.

 **BEYONDCLEAN** 

Have more questions? Contact Beth at: beth.perry@censis.com