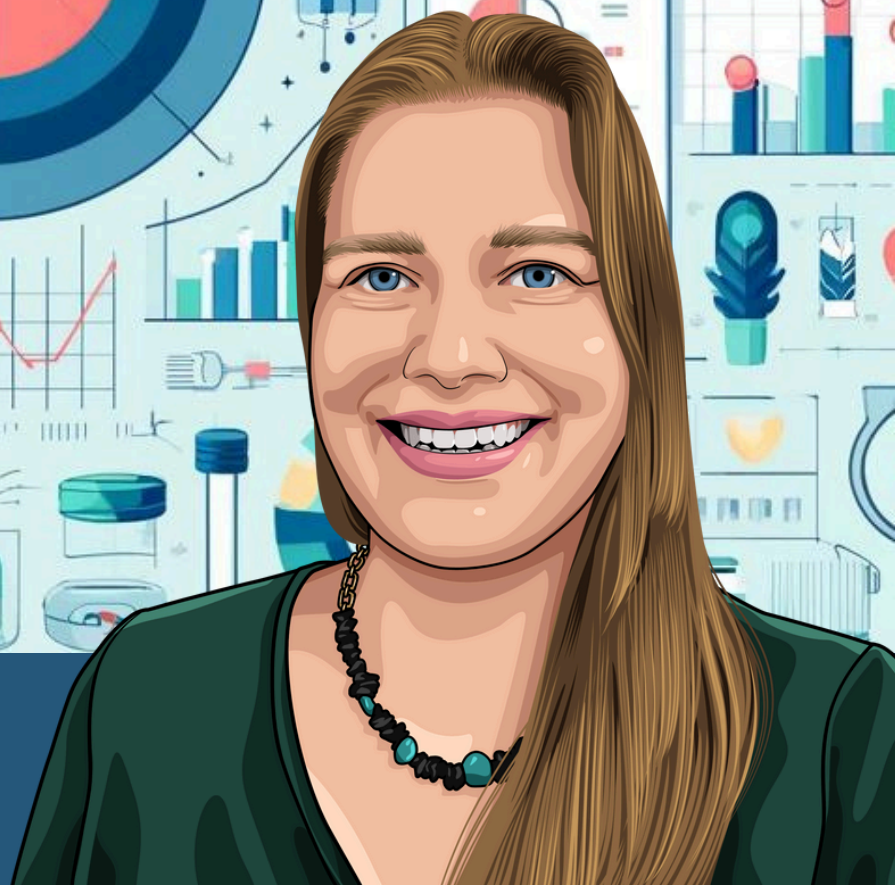


GUTS = GLORY



SPD DATA EXPERT

**BEYOND
CLEAN**

Beth Perry

**Engineer, Business Intelligence &
Analytics | Censis Technologies**

Beyond Clean SPD Data Expert™:

Guts = Glory

Beth Perry

Engineer, Business Intelligence & Analytics | Censis Technologies

I promised early on that we'd circle back to the role of intuition in data literacy. Well, here we are!

If your organization is making a push to become more data-driven, you might feel like they're ignoring all your years of hard-earned experience and internalized insights. This would be a huge mistake. Those gut feelings are really a superpower. Intuition is like X-ray vision letting you see the story behind the data.

How?

1. Understanding context and nuance. Charts and graphs can be pretty, but without context, numbers are just that – numbers. It's your understanding of the day-to-day operations and challenges of your department that give meaning to those numbers.

For example, while building productivity dashboards, I noticed that the average assembly time per instrument for one hospital had sharply increased a few months back. When I asked their long-time SPD manager about it, he quickly identified that was when several students started working. I filtered out the students and he was correct – the increase was entirely due to them.

2. Designing realistic solutions. Data doesn't have any power unless you act on it. Experience gives you the practical know-how to come up with realistic, effective solutions. When there are recurring issues, your experience helps you spot related patterns and trends and quickly narrow down the possible root causes. When you understand why something is happening, it's easier to know what to do about it.

3. Communicating insights. Being experienced helps you explain the data in a way that makes sense to your team and stakeholders, leading to better collaboration and decision-making.

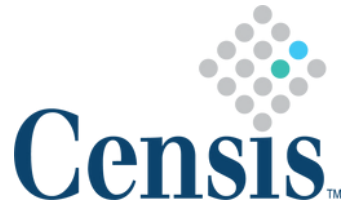
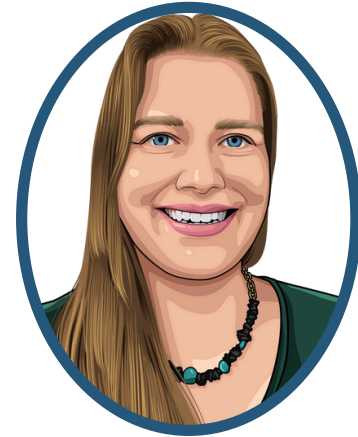
In short, your intuition makes data not just numbers, but a rich, insightful story you can read, share, and act upon.

Have more questions? Contact Beth at: beth.perry@censis.com

Beyond Clean SPD Data Expert™:

Beth Perry

Engineer, Business Intelligence
& Analytics



Beth is a Business Intelligence and Analytics Engineer with Censis Technologies. She has 17 years' experience exploring databases and designing data visualizations. With her educational background in journalism, she strives to find practical ways to communicate insights both clearly and effectively.

Since 2012, Beth has enjoyed building and supporting tray tracking software programs critical to Sterile Processing teams across the United States. Her passion is to create data and analytics tools that drive operational excellence and ensure patient safety. She won an innovation award in 2022 for her work on Censis' analytics platform.

 **BEYONDCLEAN** 

Have more questions? Contact Beth at: beth.perry@censis.com