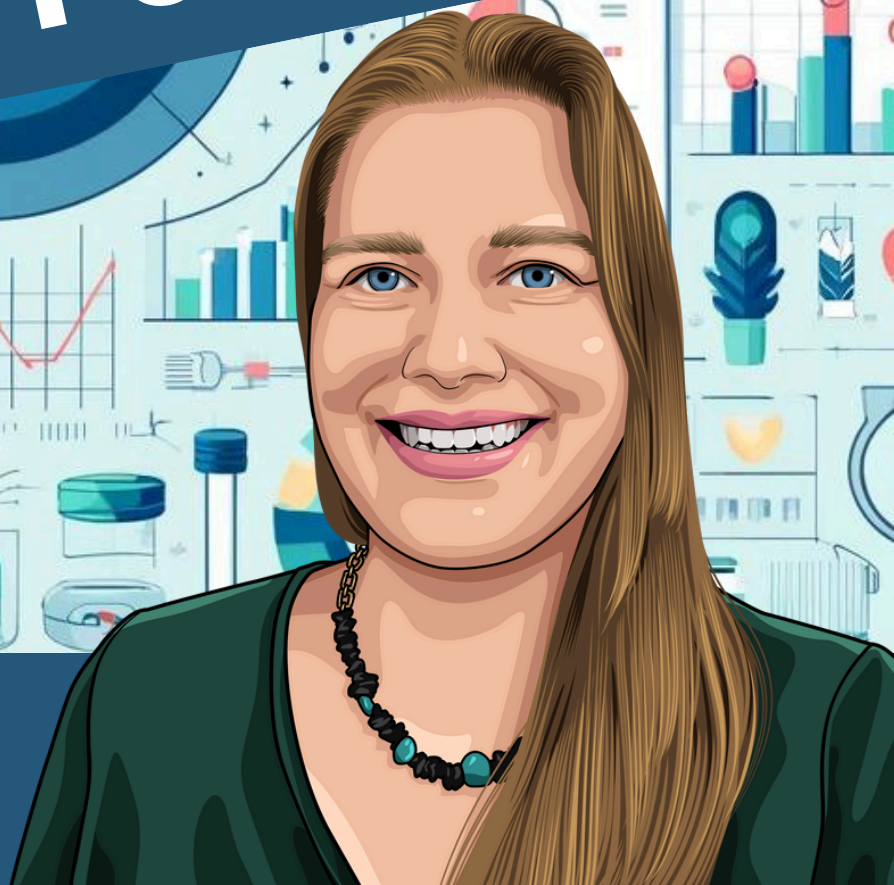


LET DATA
WORK FOR YOU!

SPD DATA EXPERT

 **BEYOND
CLEAN**



Beth Perry

Engineer, Business Intelligence &
Analytics | Censis Technologies

Beyond Clean SPD Data Expert™:

Let Data Work for You

Beth Perry

Engineer, Business Intelligence & Analytics | Censis Technologies
Optimization. It's always a hot topic in Sterile Processing. How do you do more, go faster, get better?

The Oxford English dictionary defines optimization as, "the action of making the best or most effective use of a situation or resource." But optimization takes time and resources, so it's important to target your efforts where they'll have the biggest payoff. Data can help.

One particularly useful data set is a list of your most frequently processed trays. Often only a few sets make up a large portion of your total processing. This is one of those 80/20 rules of thumb: 20 percent of your sets probably make up 80 percent of the work you do.

Let's look at two big ways you can make this data work for you.

- Filling gaps in your database. If you use tray tracking software, you probably have some sets that are missing data. Maybe they're missing count sheets, or you want to add a new attribute, like complexity/intensity ratings. Using our 80/20 rule, if you make sure your top 20% sets all have count sheets and complexity ratings, then you've covered 80% of all the count sheets you're likely to see each day and you're 80% of the way to knowing the average tray complexity processed at your site.
- Evaluating the quantity of instruments in your sets. A few months ago, I showed how large instrument sets affect SPD's productivity. If this is an issue at your site, start looking at your most frequently processed sets. Removing just one instrument from a set assembled 5 times a day has 5-7 times the impact of removing 5 instruments from a set assembled only once per week.

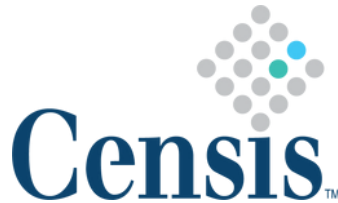
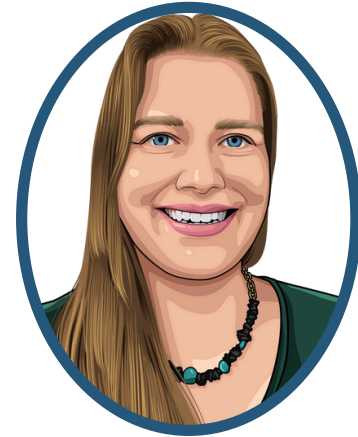
You already work hard. Data makes it easier to work smart at the same time.

Have more questions? Contact Beth at: beth.perry@censis.com

Beyond Clean SPD Data Expert™:

Beth Perry

Engineer, Business Intelligence
& Analytics



Beth is a Business Intelligence and Analytics Engineer with Censis Technologies. She has 17 years' experience exploring databases and designing data visualizations. With her educational background in journalism, she strives to find practical ways to communicate insights both clearly and effectively.

Since 2012, Beth has enjoyed building and supporting tray tracking software programs critical to Sterile Processing teams across the United States. Her passion is to create data and analytics tools that drive operational excellence and ensure patient safety. She won an innovation award in 2022 for her work on Censis' analytics platform.

 **BEYONDCLEAN** 

Have more questions? Contact Beth at: beth.perry@censis.com